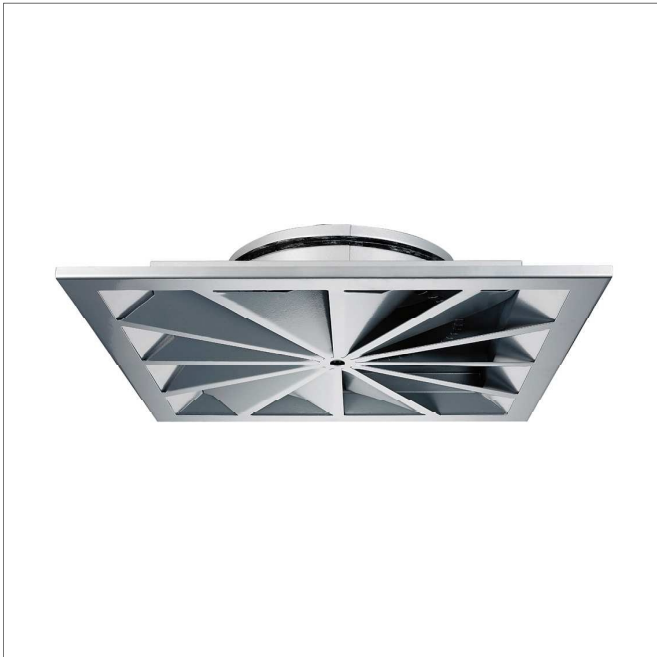
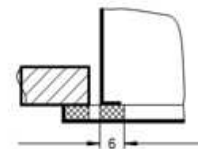
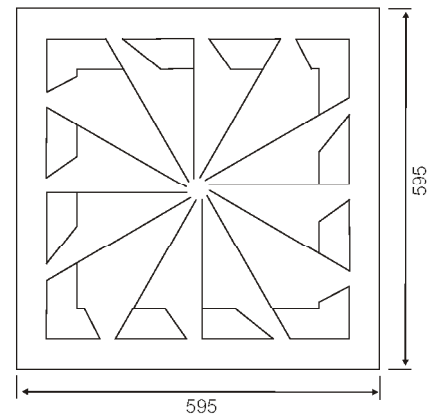


Swirl air vents with round connections

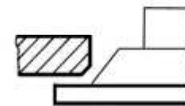


Swirl air vent (NWQ series)



assembly of faceplate using a central screw

assembly in excision of the roof



flush mounting in suspended ceiling



DESCRIPTION

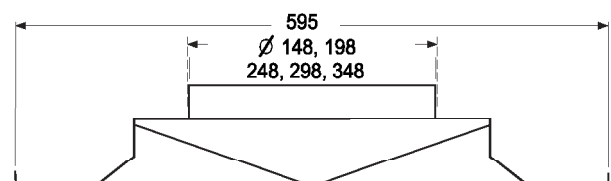
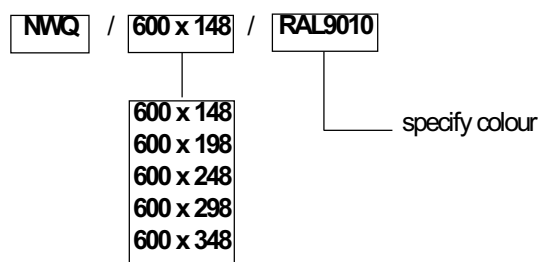
NWQ-1 series swirl air vents are especially useful in comfort air-conditioning installations, e.g. in offices and commercial buildings, where they are provided as air-supply and air-exhaust vents. The swirl horizontal air supply ensures the high induction level, fast temperature equalization and fast stream speed drop.

The air vents may supply air with temperature differences between +10 and -10 °K and room height exceeding 2.8 m. The NWQ-1 series swirl air vents include a square front plate with a sealing tape and radial immovable elements directing the airflow. In order to obtain a low level of acoustic power at high efficiency, the triangular parts directing the air reach up to the corners of the square air vent.

MATERIAL

Air vents are made of galvanised steel sheet. The external surfaces are powder-coated (white – RAL 9010).

Order number



Swirl air vents with round connections

Size	Neck velocity fpm	300	400	500	600	700	800	900	1000	1200	1400	1600
	Velocity pressure	.006	.010	.016	.023	.032	.041	.051	.063	.090	.122	.160
148	Total compr.	.014	.026	.041	.058	.079	.102	.131	.162	.212	.315	.413
	m3/h	102	136	170	204	238	272	306	340	400	468	536
	Range	1-1-3	1-2-4	2-3-5	2-3-6	2-4-7	3-4-8	3-5-9	4-5-10	1-6-11	5-7-11	5-8-12
	dB	-	-	-	-	-	16	20	24	30	35	38
198	Total compr.	.015	.027	.042	.060	.082	.107	.136	.168	.242	.329	.430
	m3/h	179	238	298	357	417	479	536	595	716	833	952
	Range	2-3-5	2-4-7	3-5-9	4-5-10	4-6-11	5-7-11	5-8-12	6-9-12	7-10-14	8-10-15	9-11-16
	dB	-	-	-	-	17	22	25	29	34	38	40
248	Total compr.	.016	.028	.043	.062	.085	.111	.140	.173	.266	.340	.443
	m3/h	281	374	459	561	646	740	833	927	1114	1301	1479
	Range	3-5-9	4-5-10	5-7-11	6-8-12	6-9-13	7-10-14	8-10-16	8-11-18	9-11-19	10-12-20	12-16-22
	dB	-	-	-	16	22	27	31	34	39	44	48
298	Total compr.	.016	.028	.043	.063	.086	.113	.142	.176	.280	.346	.451
	m3/h	400	536	663	799	935	1071	1199	1335	1683	1870	2134
	Range	4-6-10	5-7-12	6-8-14	7-10-16	8-11-18	9-12-18	10-13-20	11-14-21	13-17-24	15-20-27	17-23-30
	dB	-	-	-	20	25	30	34	37	43	48	53
348	Total compr.	.016	.028	.043	.064	.088	.113	.142	.176	.280	.346	.451
	m3/h	544	723	901	1080	1267	1445	1624	1802	2159	2533	1882
	Range	5-7-12	7-9-15	8-10-17	9-12-18	10-14-21	12-16-22	13-17-24	15-21-27	17-24-31	19-28-35	21-31-40
	dB	-	17	24	30	34	38	41	44	50	54	57

*Range – the values given are applicable with the following speeds: 0.254 m/s – 0.508 m/s – 0.762 m/s.