



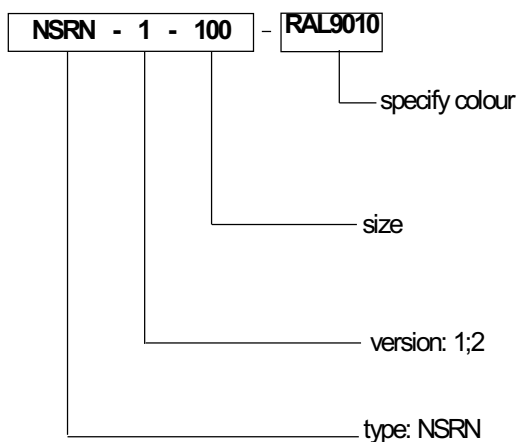
DESCRIPTION

NSRN 1 and NRSN 2 air vents are used for hot and cold air-supply/air-exhaust in offices and shopping centres. Air vents can be installed on the ceiling, where certain aesthetic standards are required. They have an adjustable air system (vertical and horizontal), which is perfect for constant supply of air..

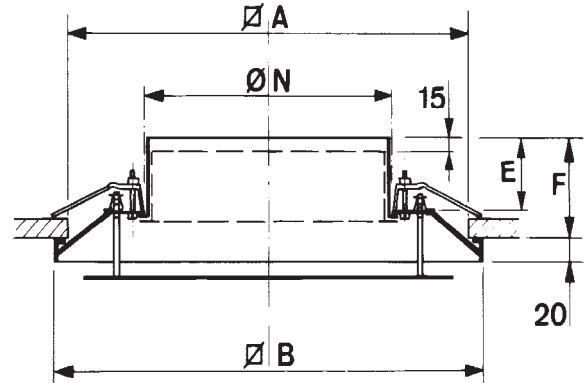
SHORT CHARACTERISTIC

The vent is made of powder coated sheet metal in RAL 9010. The vent can be painted any colour of the RAL palette upon special request

ORDER REFERENCE

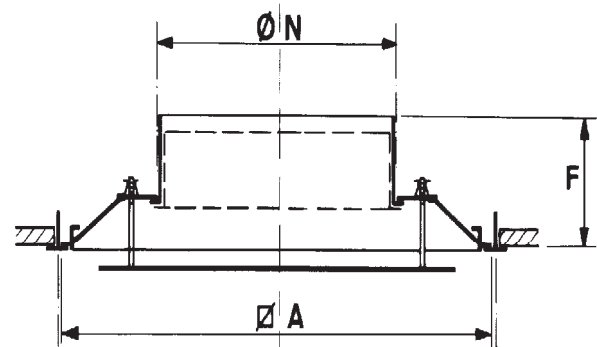


NSRN 1



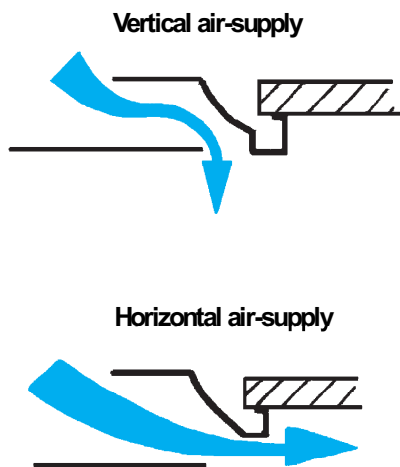
Size	N mm	A mm	B mm	E mm	F mm
100	100	190	215	51	58
125	125	215	240	51	58
160	160	305	330	71	93
200	200	345	370	71	93
250	250	395	420	71	93
315	315	460	485	71	93

NSRN 2

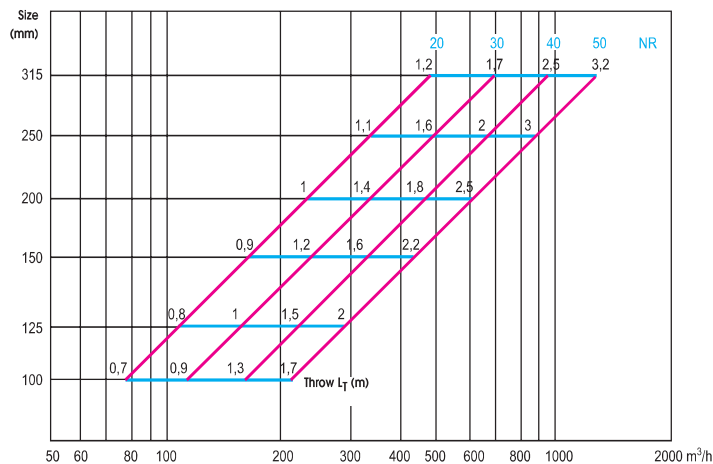


Size	N mm	A mm	F mm
100	100	294	75
125	125	294	75
160	160	294	95
200	200	594	110
250	250	594	110
315	315	594	110

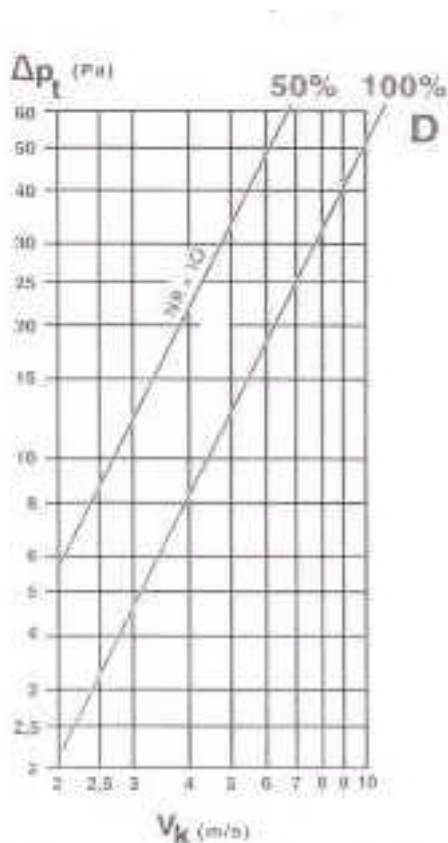
ceiling air vent with adjustable air-supply



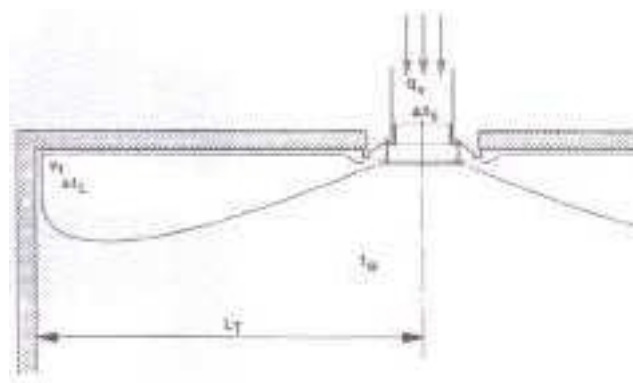
Fast selection diagram



Decrease of pressure with a choke valve



Example

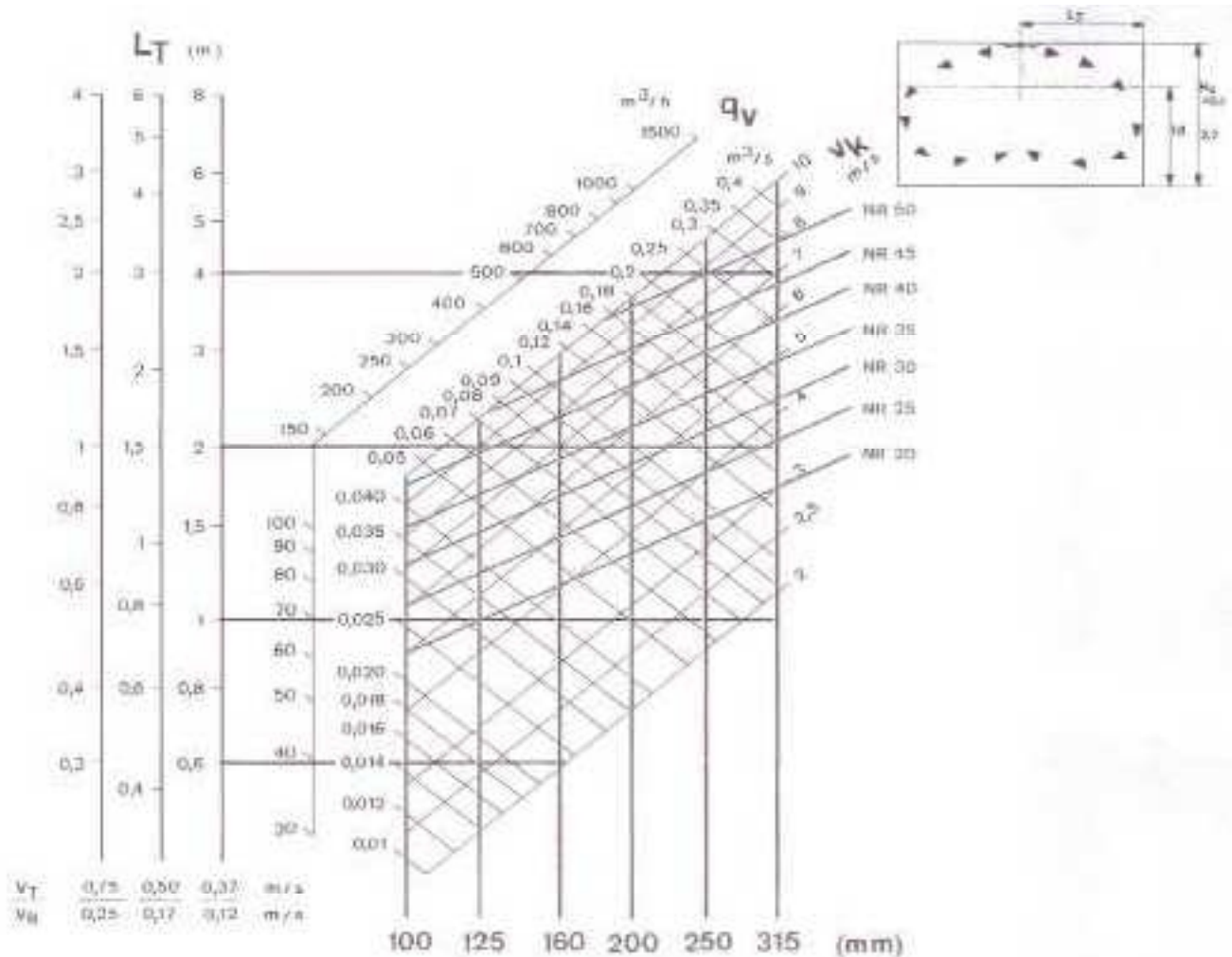


- $q_v = 0,07 \text{ m}^3/\text{s}$
- $L_T = 1 \text{ m}$ at $v_T = 0,50 \text{ m/s}$
- Solution:
- size 200
- velocity $v_k = 4.1 \text{ m/s}$
- noise NR 22
- total pressure with choke valve open: $\Delta P_t = 8,5 \text{ Pa}$.

ceiling air vent with adjustable air-supply

Diagram of selection

- Installation in a ceiling
- cooling $\Delta t_s = - 14 \text{ K}$
- choke valve open
- warming $\Delta t_s = + 30 \text{ K}$



$A_k - i A_h - (m^2)$						
Size	100	125	160	200	250	315
A_k	0,0044	0,0066	0,0110	0,0171	0,0270	0,0429
A_h	0,0079	0,0123	0,0201	0,0314	0,0491	0,0779

