

expansion boxes for diffusers NW

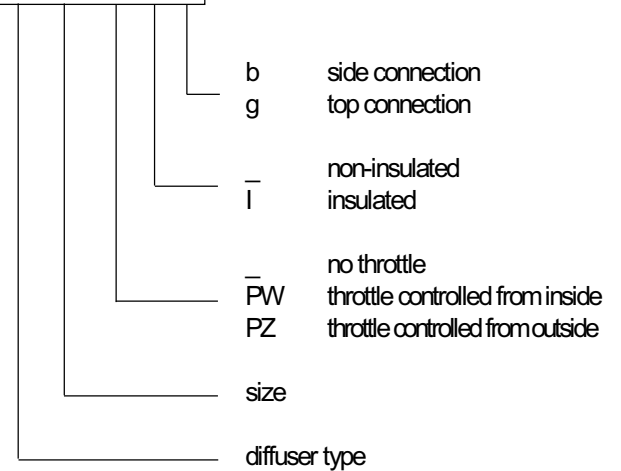
Expansion boxes can be connected to the ventilation installation through the side or top.

Boxes can be thermally and acoustically insulated from the inside by K-Flex rubber mat.

Upon customer's request we can make other types of expansion boxes accordingly to provided drawings.

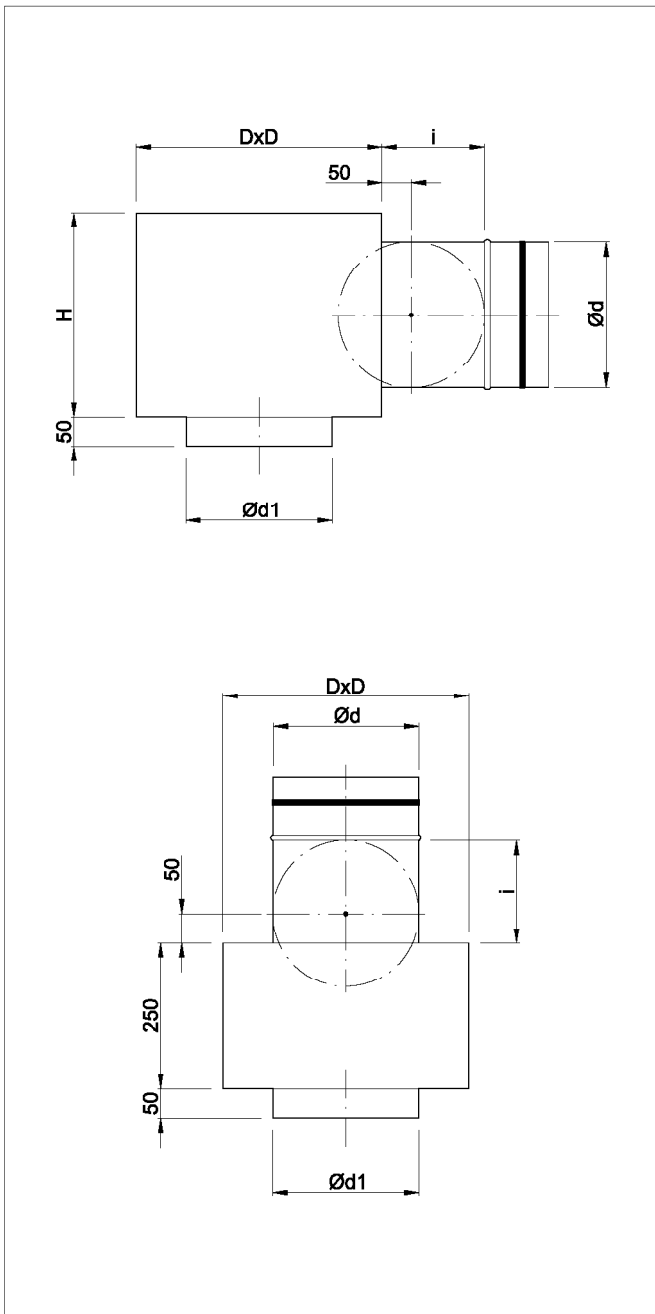
ORDER REFERENCE

SR/NW-160-PZ-I-g



STANDARD SIZES

Size	125	160	200	250	315	355	400	450	500
D [mm]	225	260	300	350	420	460	500	550	600
H [mm]	200	225	260	280	325	350	420	500	500
Ød [mm]	98	123	158	198	248	248	313	398	398
Ød1 [mm]	125	160	200	250	315	355	400	450	500
i [mm]	100	115	130	150	175	175	210	210	220



DESCRIPTION

SR/NW are expansion boxes for NW diffusers. They stabilize the airflow and ensure uniform air supply to the diffuser. Expansion boxes connect diffusers with ventilation installation. They are made of zinc-coated sheet, joint by non-welded Click-Clock connection.

expansion boxes for diffusers NW

INSTALLATION

Expansion boxes SR/NW are designed for installation between the ceiling and underslung ceiling. Prepare an installation hole of a size of ØD2 . The box can be mounted onto the ceiling by appropriate hangers (bars, pins...) and installation slings.

Upon customer's request, boxes can be equipped with factory slings.

