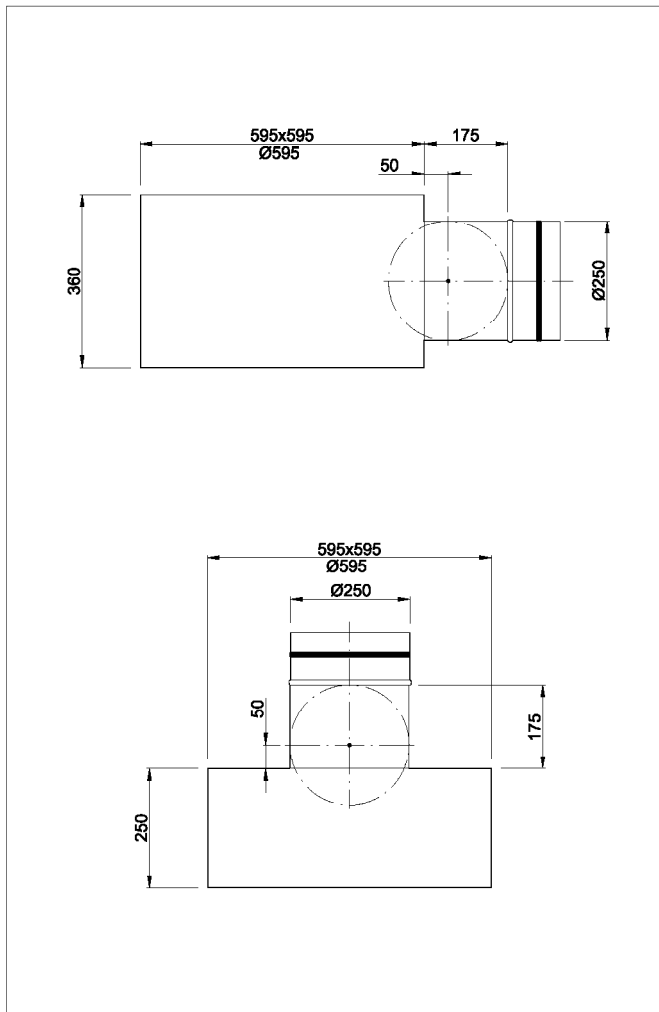


expansion boxes for diffusers NSP/DZ



DESCRIPTION

SR/NSP are expansion boxes for diffusers NSP/DZ. They stabilize the airflow and ensure uniform air supply to the diffuser. Expansion boxes connect diffusers with ventilation installation. They are made of zinc-coated sheet, joint by non-welded Click-Clock connection.

Expansion boxes can be connected to the ventilation installation through the side or top.

Boxes can be thermally and acoustically insulated from the inside by K-Flex rubber mat.

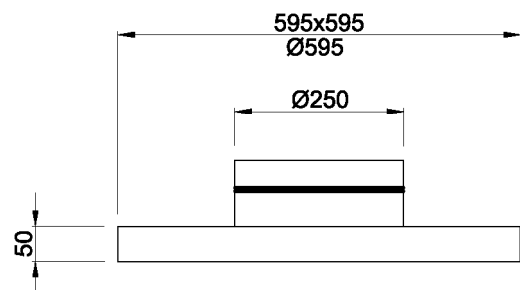
Upon customer's request we can make other types of expansion boxes accordingly to provided drawings.

ORDER REFERENCE

SR / NSP - RQ - PZ - I - g

- b side connection
- g top connection
- N non-insulated
- I insulated
- no throttle
- PW throttle controlled from inside
- PZ throttle controlled from outside
- version type
- diffuser type
- SR expansion box
- PS spiro transition

PS - Spiro transition



INSTALLATION

Expansion boxes SR/NSP are designed for installation between the ceiling and underslung ceiling. Prepare an installation hole of a size of 595x595 or $\varnothing 595$ mm. The box can be mounted onto the ceiling by appropriate hangers (bars, pins...) and installation slings or mounted directly in the underslung ceiling.

Upon customer's request, boxes can be equipped with

1. factory slings
2. a crossbar that allows for installation of the front panel with one central screw

