

expansion boxes for diffusers NNW

Expansion boxes can be connected to the ventilation installation through the side or top.

Boxes can be thermally and acoustically insulated from the inside by K-Flex rubber mat.

Upon customer's request we can make other types of expansion boxes accordingly to provided drawings.

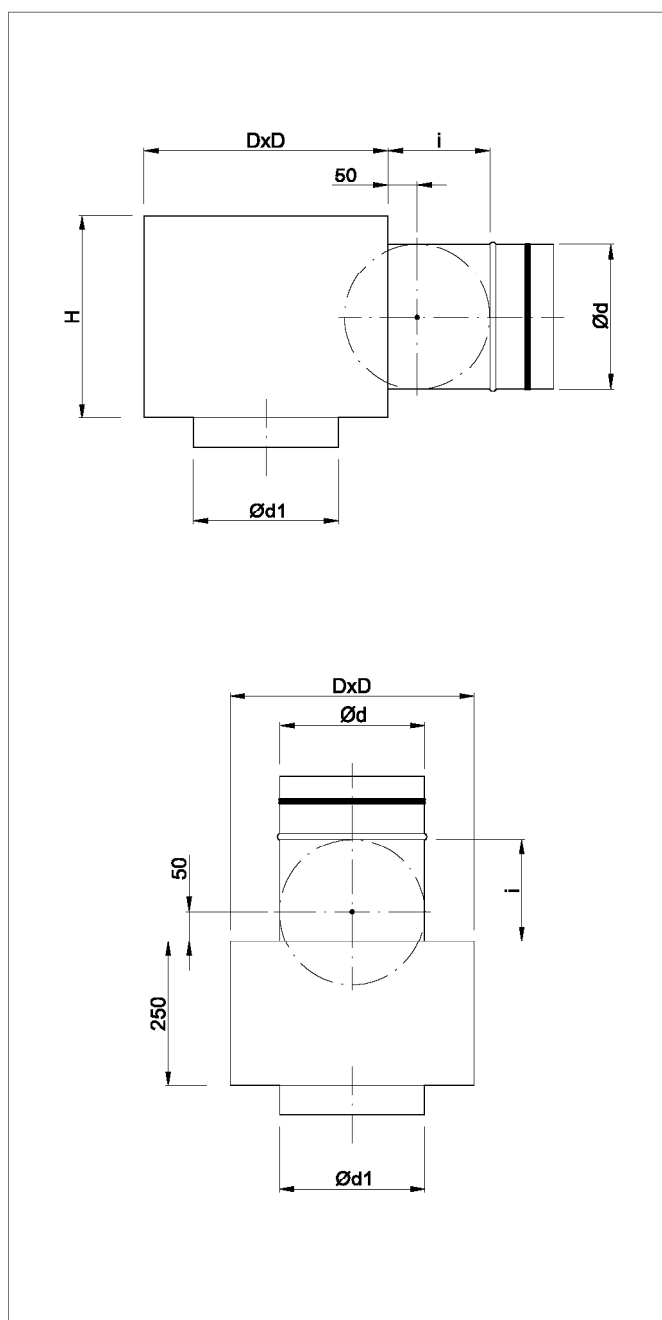
ORDER REFERENCE

SR / NNW - 250 - PZ - I - g

- b side connection
- g top connection
- non-insulated
- I insulated
- no throttle
- PW throttle controlled from inside
- PZ throttle controlled from outside
- size
- diffuser type

STANDARD SIZES

Size	125	160	200	250	315	400	500
D [mm]	225	260	300	350	420	500	600
H [mm]	225	260	300	350	420	500	500
Ød [mm]	98	123	158	198	248	313	398
Ød1 [mm]	125	160	200	250	315	400	500
i [mm]	115	130	150	175	200	250	250



DESCRIPTION

SR/NNW are expansion boxes for NNW diffusers. They stabilize the airflow and ensure uniform air supply to the diffuser. Expansion boxes connect diffusers with ventilation installation. They are made of zinc-coated sheet, joint by non-welded Click-Clock connection.

expansion boxes for diffusers NNW

INSTALLATION

Expansion boxes SR/NNW are designed for installation between the ceiling and underslung ceiling or hanging of the ceilings. If installing in between the ceiling and underslung ceiling, a hole should be left of a size of $\text{ØD2} - 20$ mm for the chosen diffuser. The diffuser should be connected to the expansion box with rivets or screws. The box can be mounted on the ceiling by appropriate hangers (bars, pins...) or installation slings.

Upon customer's request, boxes can be equipped with factory slings.

