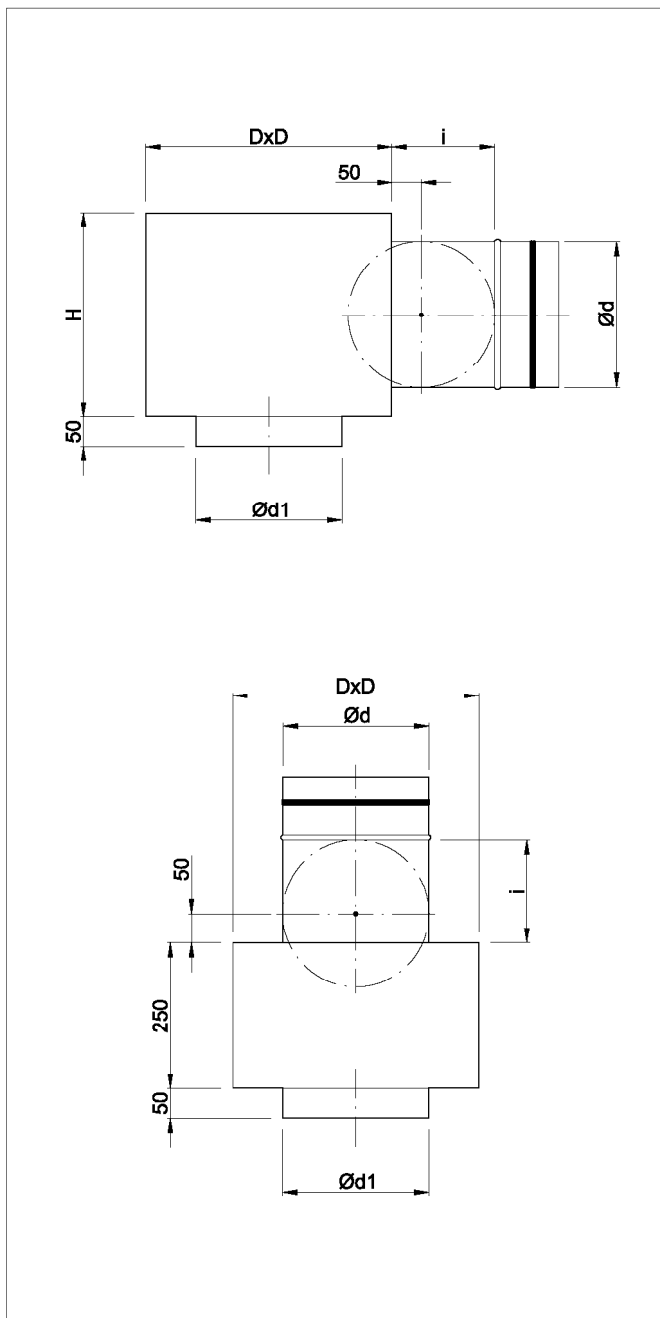


expansion boxes for diffusers ONS/RD i ONS/RDM



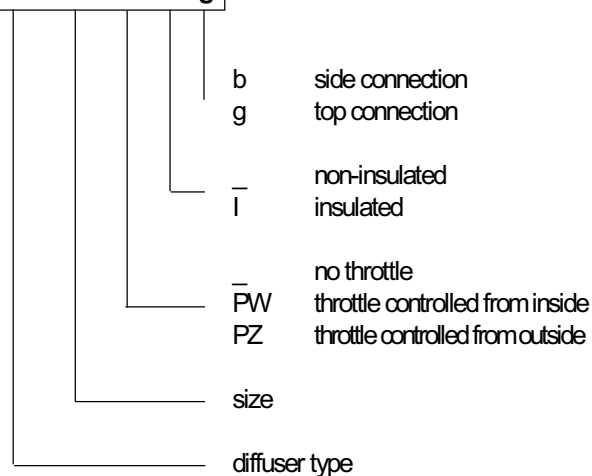
Expansion boxes can be connected to the ventilation installation through the side or top.

Boxes can be thermally and acoustically insulated from the inside by K-Flex rubber mat.

Upon customer's request we can make other types of expansion boxes accordingly to provided drawings.

ORDER REFERENCE

SR / ONS - 400 - PZ - I - g



STANDARD SIZES

| Size | 300 | 400 | 500 | 600 | 700 | 700 |
|----------|-----|-----|-----|-----|-----|-----|
| D [mm] | 225 | 260 | 300 | 350 | 400 | 400 |
| H [mm] | 225 | 260 | 300 | 350 | 400 | 400 |
| Ød [mm] | 78 | 98 | 123 | 158 | 198 | 248 |
| Ød1 [mm] | 100 | 125 | 160 | 200 | 250 | 315 |
| i [mm] | 115 | 130 | 150 | 175 | 200 | 200 |

DESCRIPTION

SR/ONS are expansion boxes for diffusers ONS/RD AND ONS/RDM. They stabilize the airflow and ensure uniform air supply to the diffuser. Expansion boxes connect diffusers with ventilation installation. They are made of zinc-coated sheet, joint by non-welded Click-Clock connection.

INSTALLATION

Expansion boxes SR/ONS are designed for installation above the underslung ceiling. Prepare an installation hole of a size of $\varnothing d1$. The box can be mounted onto the ceiling by appropriate hangers (bars, pins...) and installation slings. If installing the diffuser with the expansion box in variant 2, they can be connected through the round ventilation duct by a distance of no more than 500 mm.

Upon customer's request, boxes can be equipped with factory slings.

INSTALATION IN THE ROOF

