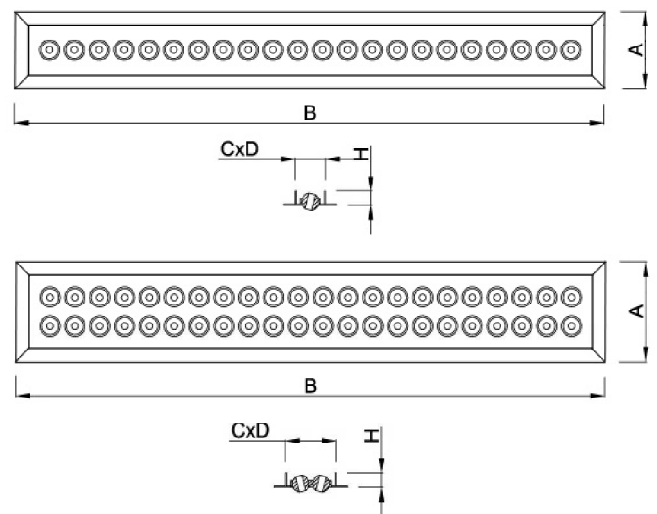
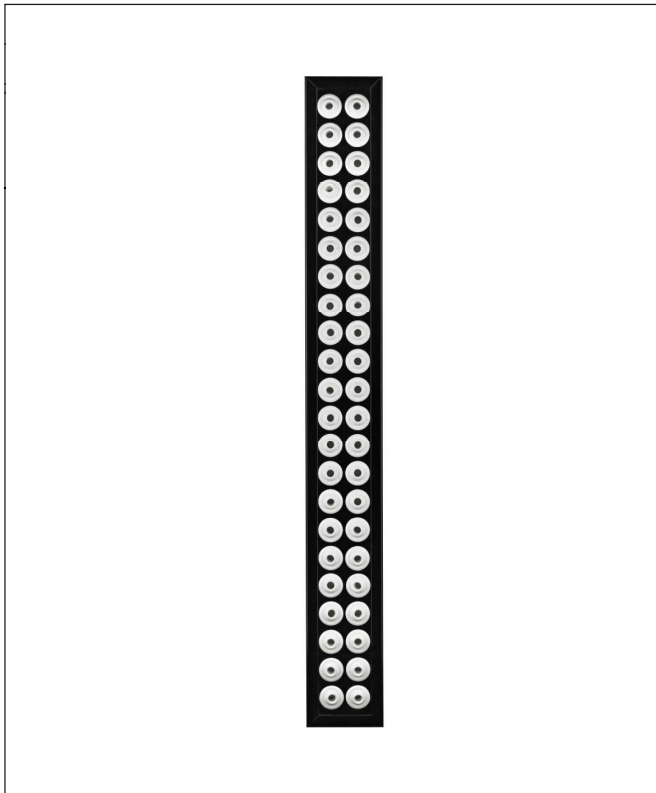


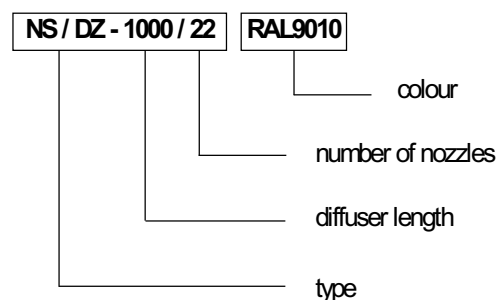
slot diffusers with long-throw nozzles



STANDARD SIZES

| NS/DZ | A [mm] | B [mm] | C [mm] | D [mm] | H [mm] | Number of nozzles |
|---------|--------|--------|--------|--------|--------|-------------------|
| 1000/22 | 80 | 1030 | 50 | 1000 | 20 | 22 |
| 1000/44 | 120 | 1030 | 90 | 1000 | 20 | 44 |
| 1500/33 | 80 | 1530 | 50 | 1500 | 20 | 33 |
| 1500/66 | 120 | 1530 | 90 | 1500 | 20 | 66 |
| 2000/44 | 80 | 2030 | 50 | 2000 | 20 | 44 |
| 2000/88 | 120 | 2030 | 90 | 2000 | 20 | 88 |

STANDARD SIZES



INSTALLATION

NS/DZ diffusers are designed for installation with the expansion box SR/NSDZ. Use rivets or screws.

FEATURES

The figure shows airflow capacity V (m³/h), pressure loss p (Pa), airflow scope L (m) for end speed of 0.2 m/s, and volume level [db(A)].

DESCRIPTION

NS/DZ are slot diffusers with adjustable long-throw nozzles designed low- and medium-pressure installations. As the shape of air outlet can be adjusted, the air can be supplied in any direction. Air can be simultaneously supplied vertically and horizontally, therefore the air can be supplied at the temperature lower or higher than the temperature in the ventilated room.

NS/DZ diffusers can be used in air-conditioning and ventilation systems for halls and offices where comfortable temperature is required.

FEATURES

- diffusers made of steel sheet with aluminium frame
- standard make includes one, two or three rows of long-throw nozzles
- nozzles position can be adjusted as required
- standard length of diffusers: 1000, 1500 or 2000 mm
- nozzles are made of high-quality material
- can be installed with the expansion box SR/NSDZ
- available in standard RAL 9010 colour
- upon customer's request, can be made available in any size and colour from RAL palette

slot diffusers with long-throw nozzles

