

### DESCRIPTION

NK/RD and NK/RDM are air duct diffusers with adjustable round nozzles designed for low- and medium-pressure installations directly in round ventilation ducts. Nozzles of diameter sizes 57 (RD) and 35 (RDM) are ended with sinusoidal outlets that allows for high air diffusion. Nozzles position can be adjusted to any direction so that shape of the air stream can be regulated. They can be used with constant and variable airflow. The air can be supplied at the temperature lower or higher than the temperature in the ventilated room.

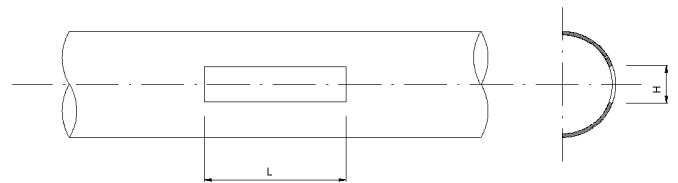
### FEATURES

- standard make includes one, two or three rows of nozzles
- adjustable airflow stream shape (360°)
- easy dispersion of vertical stream
- possible to swirl the stream
- possible simultaneous vertical and horizontal ventilation
- high induction factor
- nozzles are made of high-quality ABS material, and painted standard white
- all diffusers use nozzles of 35mm (RDM) and 57 mm (RD) diameter; single nozzle capacity of 6 and 9 m<sup>3</sup>/h with acoustic pressure of 30 dB (A)
- can be installed directly on the ventilation ducts
- available in standard RAL 9010 colour
- upon customer's request, can be made available in any size and colour from RAL palette

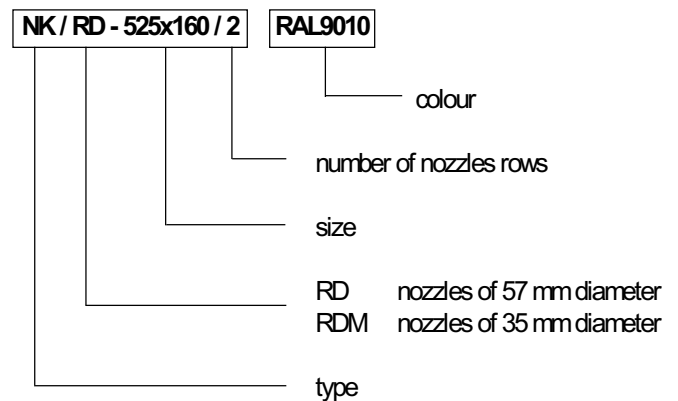
### INSTALLATION

NK/RD and NK/RDM diffusers are designed for direct installation on the ventilation ducts. To install the diffuser, prepare an installation hole sized LxH for the chosen diffuser, slide the diffuser into the hole and fix it to the duct with steel bolts. Seal the connection between the duct and the diffuser.

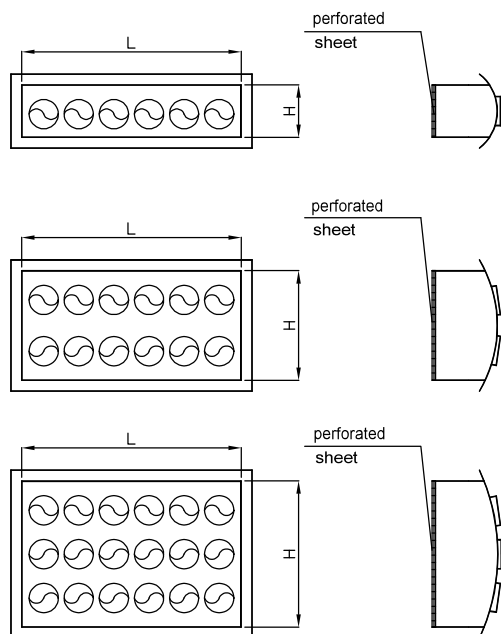
Be careful when choosing the height of the diffuser in relation to the duct diameter. See the table with standard sizes.



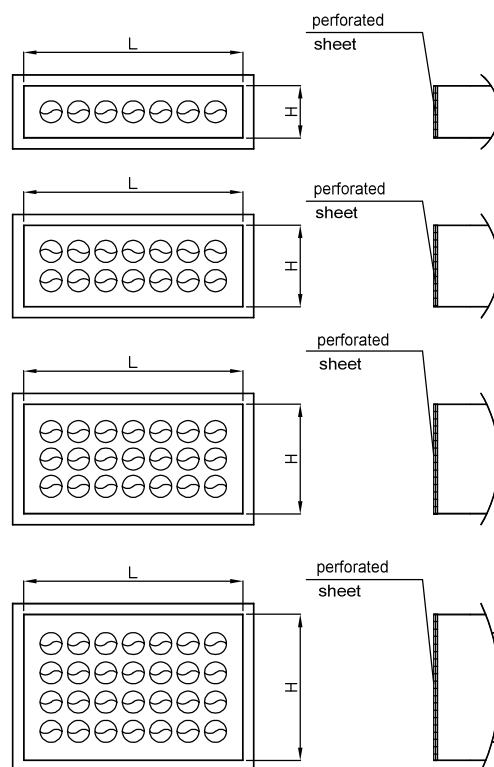
### ORDER REFERENCE



### Diffusers NK/RD



### Diffusers NK/RDM



### STANDARD SIZES

Size NK/RD	Number of nozzles rows	Number of nozzles	L [mm]	H [mm]	Air duct diameter [mm]
325x75	1	4	325	75	160-200-250
525x75	1	7	525	75	160-200-250
825x75	1	12	825	75	160-200-250
1025x75	1	15	1025	75	160-200-250
325x160	2	8	325	160	400-500-630
525x160	2	14	525	160	400-500-630
825x160	2	24	825	160	400-500-630
1025x160	2	30	1025	160	400-500-630
325x225	3	12	325	225	630-800-1000
525x225	3	21	525	225	630-800-1000
825x225	3	36	825	225	630-800-1000
1025x225	3	45	1025	225	630-800-1000

L - installation hole length  
H - installation hole height

### STANDARD SIZES

Size NK/RDM	Number of nozzles rows	Number of nozzles	L [mm]	H [mm]	Air duct diameter [mm]
325x75	1	7	325	75	160-200-250
525x75	1	11	525	75	160-200-250
825x75	1	18	825	75	160-200-250
1025x75	1	22	1025	75	160-200-250
325x125	2	14	325	125	250-315-400
525x125	2	22	525	125	250-315-400
825x125	2	36	825	125	250-315-400
1025x125	2	44	1025	125	250-315-400
325x160	3	21	325	160	400-500-630
525x160	3	33	525	160	400-500-630
825x160	3	54	825	160	400-500-630
1025x160	3	66	1025	160	400-500-630
325x225	4	28	325	225	630-800-1000
525x225	4	44	525	225	630-800-1000
825x225	4	72	825	225	630-800-1000
1025x225	4	88	1025	225	630-800-1000

L - installation hole length  
H - installation hole height

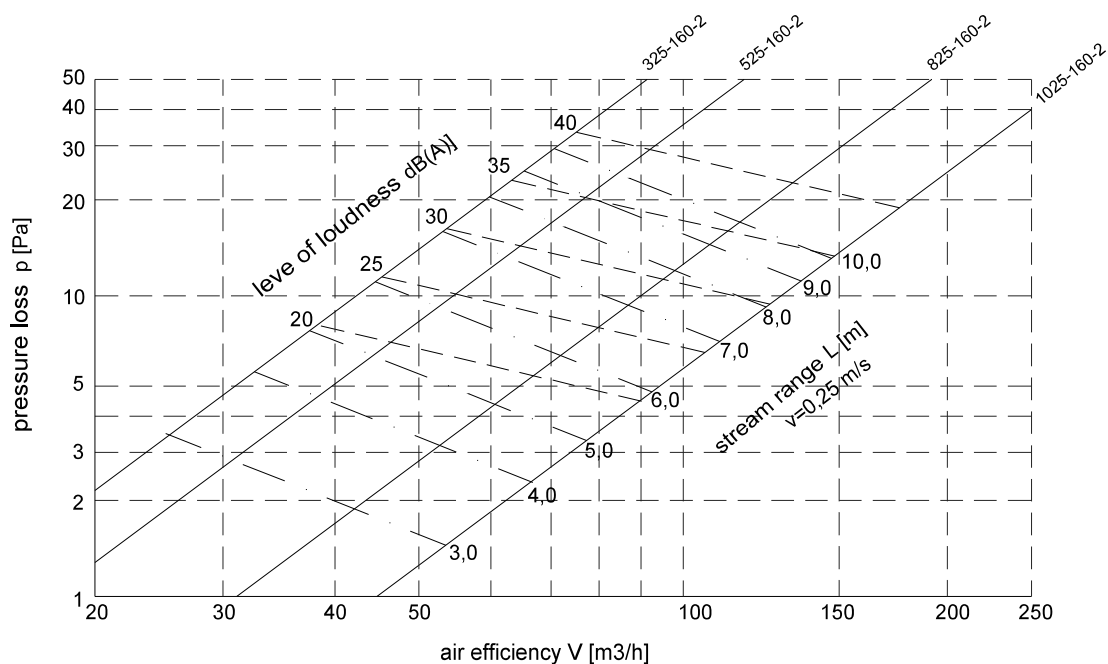
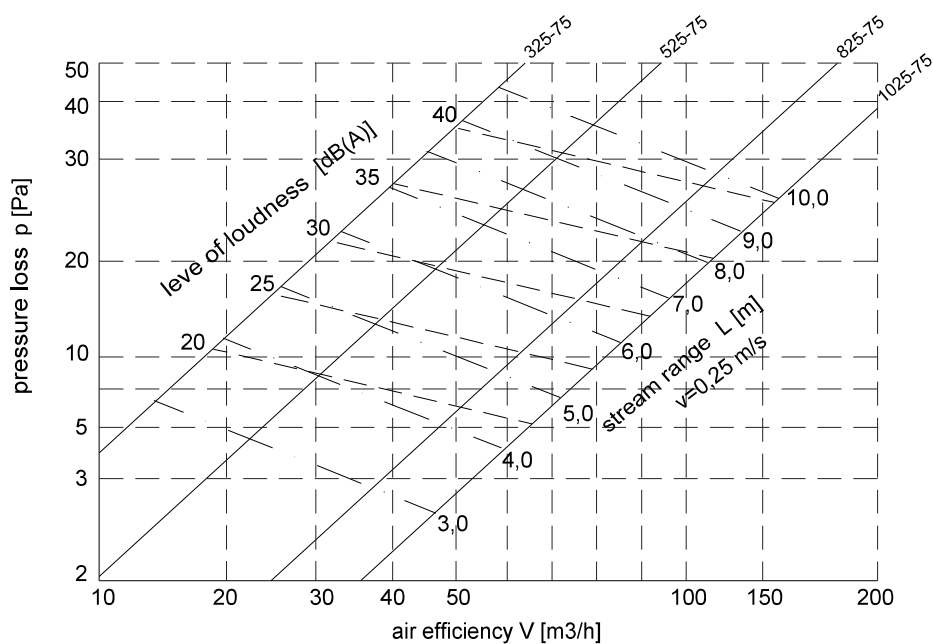
CWK Ltd. reserves the right to introduce changes in technical data

### FEATURES

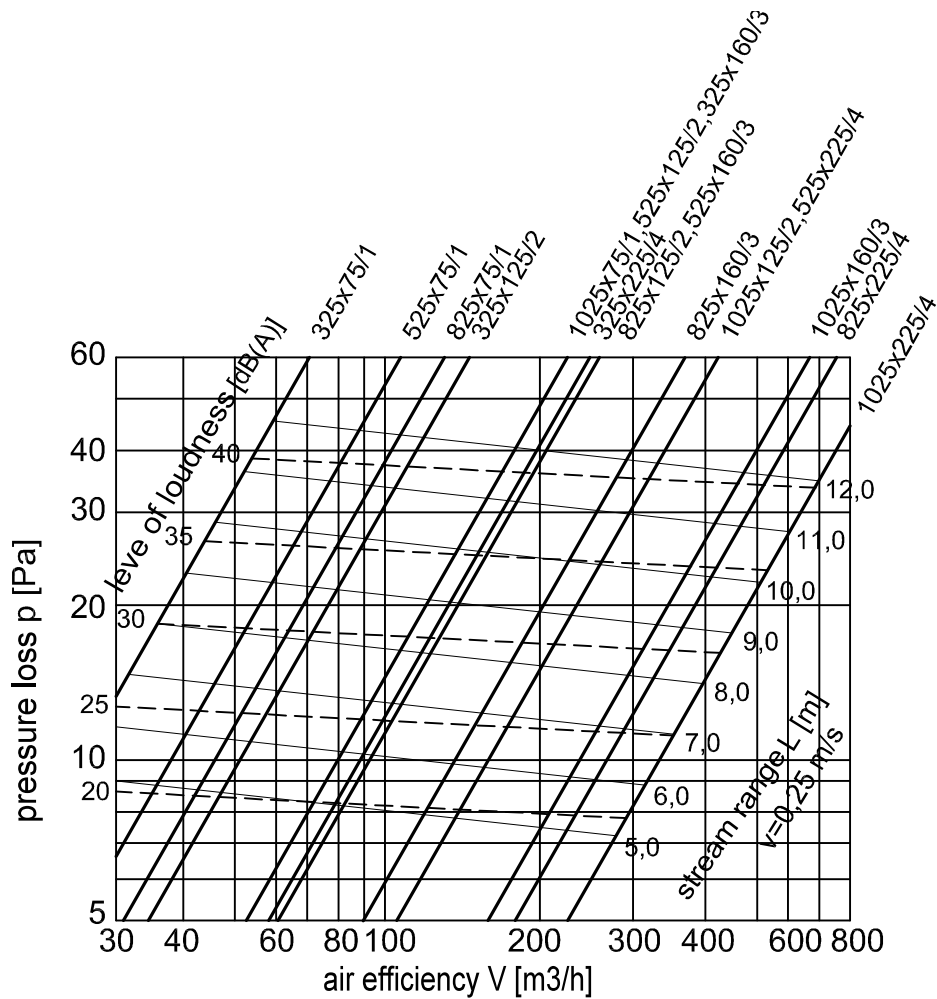
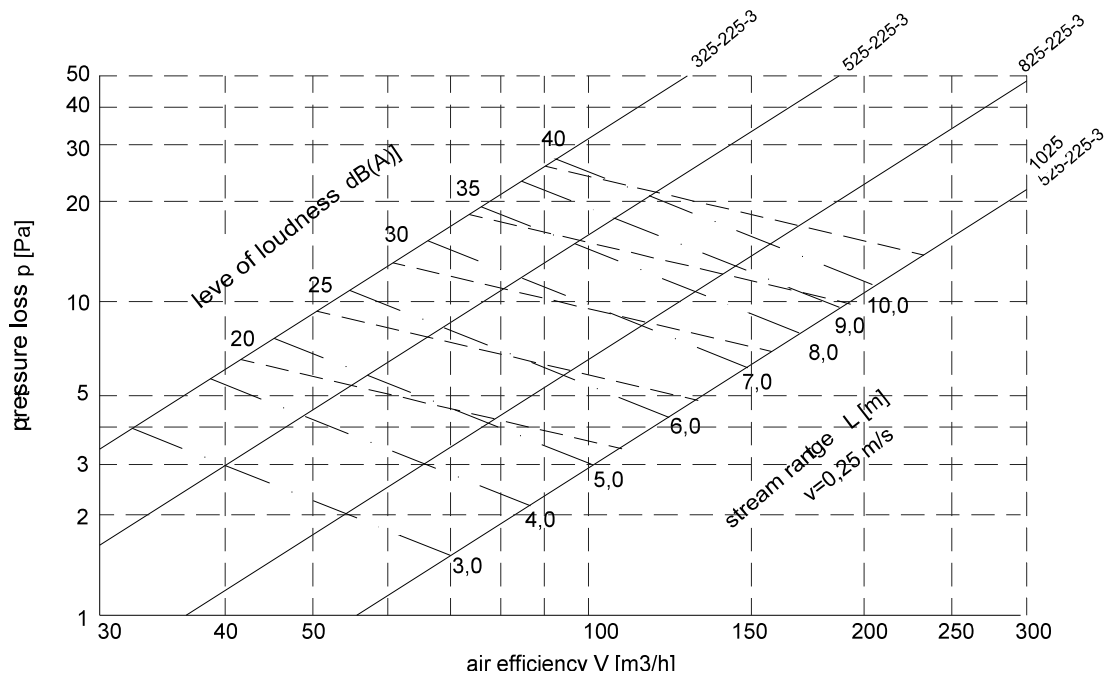
The figure shows airflow capacity  $V$  (m<sup>3</sup>/h), pressure loss  $p$  (Pa), airflow scope  $L$  (m) for end speed of 0.25 m/s, and volume level [db(A)].

The airflow scope  $L$  relates to isothermal air supply.

Diffusers NK/RD



## air duct diffusers with adjustable nozzles



CWK Ltd. reserves the right to introduce changes in technical data